

AB1-D3 PUSH BUTTON

Zones 1, 2, 21, 22

Full catalogue available on our website: www.inpratex.com

ATEX SWITCHES

ZONES 1, 2 (gas) & 21, 22 (dust)

The AB1-D3 push button is designed to control machines and systems in hazardous areas classified as Zone 1/2 and Zone 21/22. Its high IP protection rating and corrosion-resistant stainless steel housing ensure a long service life, even in aggressive environmental conditions. With its particularly flat design and rounded edges, the push button minimizes exposed surfaces, reducing the risk of external damage and dirt accumulation.





EU-Type Examination Certificate

ITEM REFERENCES

Designation:	Changeover:	Cable length:	Item No.:
AB1-D3-0301 10	1 CO	1,5 m	3A1001
AB1-D3-0301 20		3 m	3A1002
AB1-D3-0301 30		5 m	3A1003
AB1-D3-0301 40		10 m	3A1004
AB1-D3-0601 10	2 CO	1,5 m	3A1005
AB1-D3-0601 20		3 m	3A1006
AB1-D3-0601 30		5 m	3A1007
AB1-D3-0601 40		10 m	3A1008

TECHNICAL SPECIFICATIONS

Marking:	 II 2G Ex db eb IIC T6 Gb  II 2D Ex tb IIIC T85°C Db
Certificate:	EU-Type Examination Certificate
Operating temperature:	-20 °C to +60 °C
Operating voltage:	24 VDC / 230 VAC double insulated
Current consumption:	max. 1 A
Electric life:	6.0 E + 03 (230 VAC 1A) 5.0 E + 04 (30 VDC 1A)
Housing:	Stainless steel 1.4305
Mechanical life:	1.0 E + 08 switching cycles
Sealing:	EPDM
Ingress protection:	IP65
Impact resistance:	7 Nm
Mounting hole:	22.0 ... 22.3 mm / M22 x 1.5
Torque:	8 Nm
For housing thickness:	1.0 ... 15.0 mm
Weight:	150 gr (1.5 m)
Type AB1-D3 / 1 CO	
Flying lead:	3 x 0.5 mm ² / Oilflex 100 / Ø 5.4 mm
Electrical connection:	(1) brown = com / (2) black = NC / (3) grey = NO
Type AB1-D3 / 2 CO	
Flying lead:	6 x 0.5 mm ² Ø 6.9 mm
Electrical connection:	(1) brown + (4) blue = com / (2) black + (5) white = NC / (3) grey + (6) orange = NO

AB1-D3 PUSH BUTTON

Zones 1, 2, 21, 22

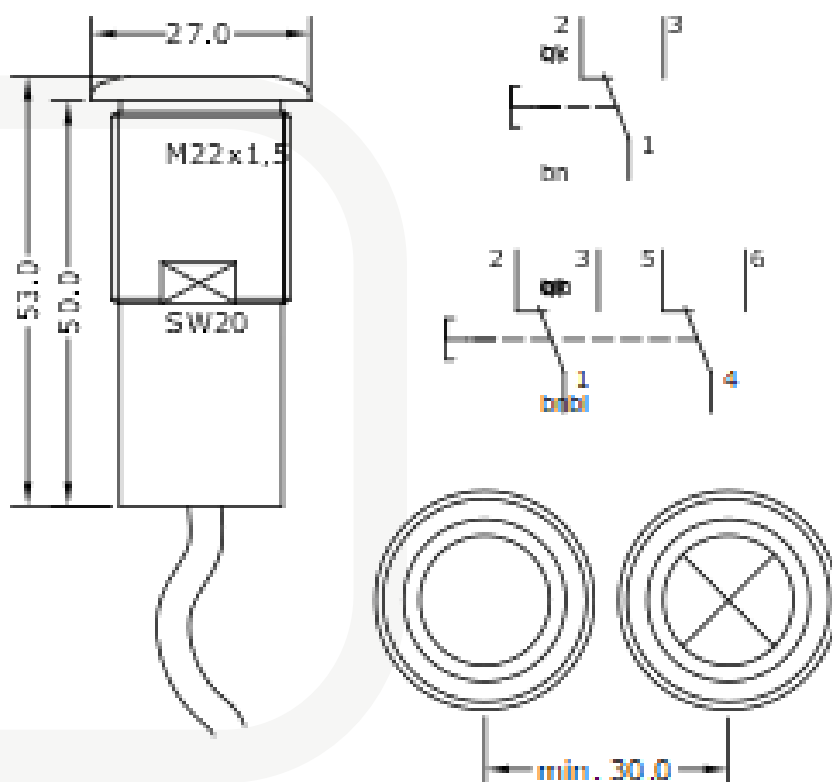
Full catalogue available on our website: www.inpratex.com

CONNECT and ACT - Due to the approval as a device, this push button can be installed in the front of a machine in the Ex zone without further certification. The low installation depth enables a particularly space-saving use.

The AB1-D3 push button has also been tested in order to be installed in certified control panels of types of protection Ex e and Ex t.

The scope of delivery includes a plastic lock nut and colored insert labels in red, yellow, green, white and black.

ACCESSORIES	
Description:	Item No.:
Earthing set (earth lug + nut)	216742
Stopping plug M22 x 1.5 VA	216751



4



CONTROL & CONNECTION EQUIPMENT